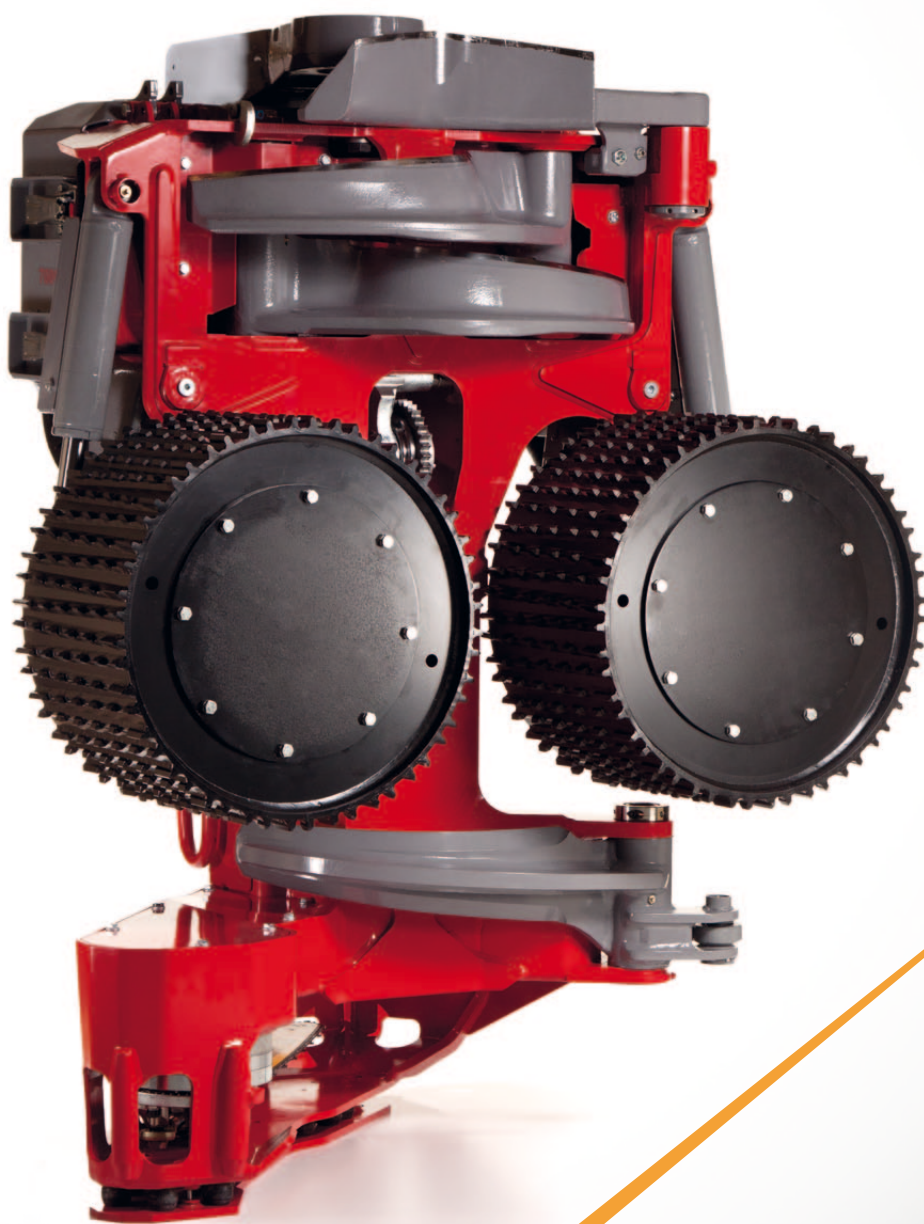


# **Log Max**<sup>®</sup> 7000C

HEADS ABOVE THE COMPETITION



[www.logmax.com](http://www.logmax.com)

## RUGGED AND LIGHTWEIGHT FOR THE FINAL CUT!

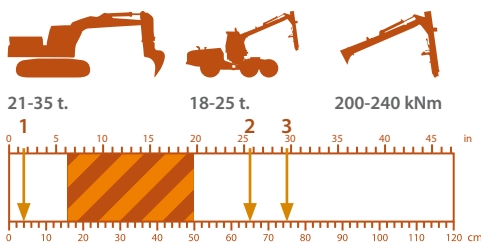


Log Max 7000C is a large head for the really heavy timber. The head combines high power and high speed, and performs very well in heavy and branchy trunks.

Variable displacement feed roller motors provide fast speed in smaller wood and automatically regulate to provide more power in tougher limbed trees.

Well placed guards and heavy covers protect internal components and hoses from damage.

High performance saw hydraulics provide full flow to the bottom saw for fast cutting in all timber sizes.



- 21-35 t.      18-25 t.      200-240 kNm
1. Min delimiting diameter
  2. Max cutting diameter, std
  3. Max cutting diameter, opt

**Feed roller options**  
Steel, V-Steel, Eucalyptus

**Optional equipment**  
Accumulation Kit, Auto Chain Tensioner, Eucalyptus equipment, Fixed protection plate, Field repair kit, Color marking, Hydraulic upper knife, Find end sensor, Snow cover, Processor knives

DIMENSIONS	METRIC	IMPERIAL
Height	1 742 mm	68.6"
Weight (incl. feed rollers and damped protection plate)	1 619 kg	3,569 lbs
Sound effect*	110 dB	110 dB
FEEDING		
Two feed rollers with variable displacement axial piston motors	660-1 320 cc.	40-81 cu.in
Optional: Two feed rollers with fixed displacement motors	1 147 cc.	70 cu.in.
Feed force std/opt	42,1/36,3 kN	9,464/8,160 lbf
Feed speed std/opt	5,2/3,9 m/sec	17/12,8 fps
Maximum roller opening	713 mm	28.1"
CUTTING / DELIMITING		
Bar length / Maximum cut capacity	up to 90 cm / cut up to 75 cm	up to 35.4" / cut up to 29.5"
Maximum full coverage delimiting diameter	560 mm	22"
Minimum hydraulics requirements for acceptable performance	165 l/min	43.5 gpm
CONTROL SYSTEM	MAXI / DASA4 / MOTOMIT / TM300 / Log Mate 402 / CabsWin	

\*This value is measured according to EN ISO 3744:2009 with an accuracy of ±2 dB (A) under publication EA-4/16:2003. The value is measured when the saw cuts with maximum speed without any load.